



**OPTRAFFIC®**

# Tripod Traffic Signals

OPTRAFFIC Tripod Traffic Signals (TTS) are manufactured in our ISO-9001 certified facility with innovative technologies and designs, which can be customized in accordance with MUTCD, AS/NZS and other regulations.

OPTRAFFIC TTS is your portable solution to manage and control traffic in temporary work zones and high-traffic scenarios, such as single lane control (one lane closure, alternative to manual traffic control), T-junctions, intersections, roadworks and construction sites.



✉ [sales@optsigns.com](mailto:sales@optsigns.com)

☎ +86-576-83998620

🌐 [www.optraffic.com](http://www.optraffic.com)

📍 No. 13 Yongsheng M. Rd., Shifeng St., Tiantai, Zhejiang, 317200 China



## Features

**OPTRAFFIC®**



High Brightness LED Lamps



Waterproof & UV Resistant



Light-Weight Compact Structure



Easy to Operate, One-Man Deployable



1.5km Long-Range Remote Control



Multiple Devices Synergy

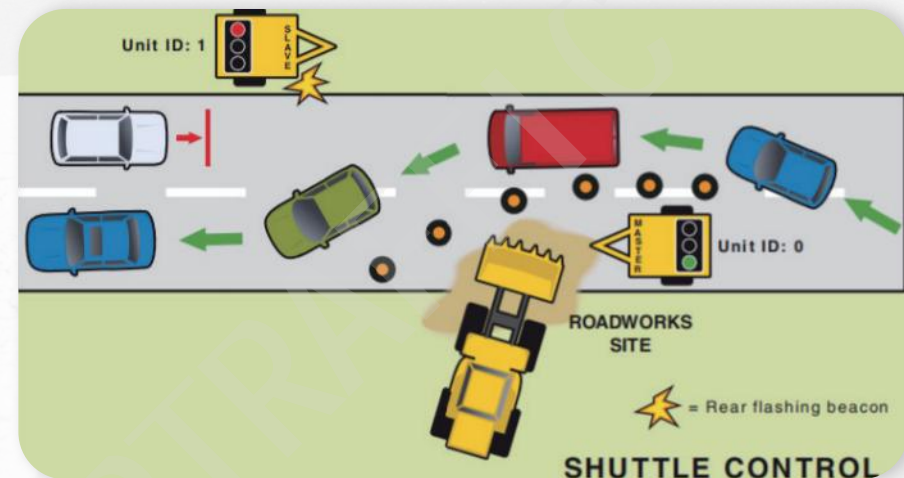
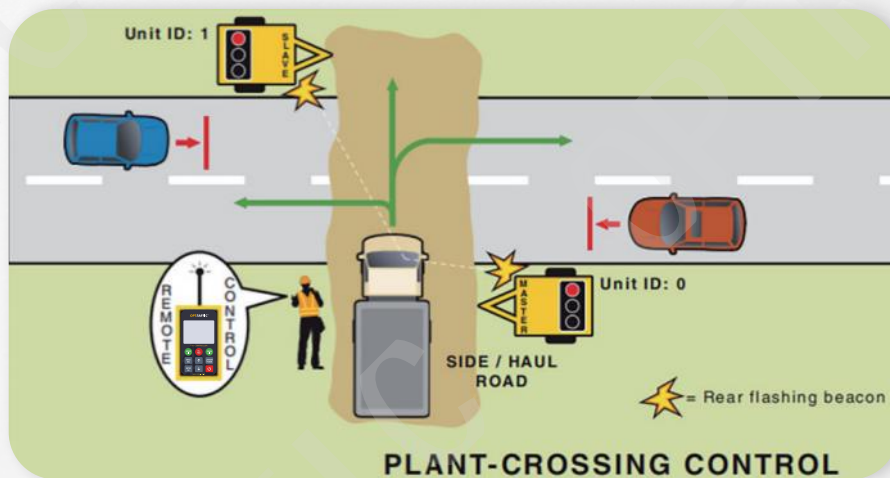




## LONG RANGE REMOTE CONTROL

The remote control is equipped with multiple operational modes for different traffic scenarios, including plant-crossing mode, gate mode, shuttle mode, etc.

The 1.5km control range allows traffic operators to easily manage traffic flows and control traffic signals from a distance.



SPECS	Tripod-Mounted PTS	Trailer-Mounted PTS
Traffic Signal Lanterns	Dia 200mm, Red, Amber, Green	Dia 200mm, Red, Amber, Green
LED Visibility Distance	800/1000m Visibility Distance	800/1000m Visibility Distance
Power System	1*22Ah Battery, 12V DC	1*125W Solar Panel, 1*200Ah Battery, 12V DC
Remote Control	1.5km (Optional Handheld Controller)	1.5km (Optional Handheld Controller)
Size (mm)	750H*250W*130D (Signal Lights) 1450-2320H (Tripod)	750H*250W*210D (Signal Lights) 1500L*1000W (Trailer)
Weight (kg)	10kg (Signal Lights)	10kg (Signal Lights)
Material	Anti-UV PVC Enclosure w. Aluminum Alloy Tripod	Hot Galvanized Trailer w. Yellow Powder Coated Cabinet
Accessory	Handheld Controller, Lamp Shroud	Handheld Controller, Radar Detector